

SUCCESS WITH LOUISIANA ENERGY CODE

Recommended Practices for Optimized Energy Savings
for Builders/Trades & Code Officials



ELECTRICAL

ELECTRICAL INSTALLATION



ELECTRICAL

Installation

- **JC 1:** Cut all holes cleanly and no more than 1 inch larger than the penetrating object.
- **JC 2:** Air seal electrical penetrations between conditioned and unconditioned space. Use fire-rated sealants where applicable.
- **JC 3:** Install recessed lighting fixtures that are insulation-contact rated (IC), sealed to drywall with caulk foam or gasket and are airtight or are located in an airtight sealed box.
- **JC 4:** Coordinate bath fan exhaust duct direction with HVAC Contractor.
- **JC 5:** Install high-efficacy lamps (e.g., CFLs, LEDs, fluorescent) or lamps controlled by occupancy sensors in 50% of light fixtures.



ELECTRICAL

ELECTRICAL INSTALLATION

JC 1: Cut all holes cleanly and no more than 1 inch larger than the penetrating object.

- How
- Why
- What to avoid



How?

Holes match wire size



Why?



ELECTRICAL JC 1

**How do you
seal this
hole?**



ELECTRICAL

ELECTRICAL INSTALLATION

JC 2: Air seal electrical penetrations between conditioned and unconditioned space. Use fire-rated sealants where applicable.

- How
- Why
- What to avoid



PROCESS



PRODUCT

How?

Seal between conditioned and unconditioned





Why?





Who is
sealing
holes?



ELECTRICAL JC 2

ELECTRICAL

ELECTRICAL INSTALLATION

JC 3: Install recessed lighting fixtures that are insulation-contact rated (IC), sealed to drywall with caulk foam or gasket and are airtight or are located in an airtight sealed box.

- How
- Why
- What to avoid



PRODUCT



**Got any in
your home?**



How? Install ICAT




ELECTRICAL JC 3



Why?



ELECTRICAL JC 3



Who
purchases
recessed lights?



ELECTRICAL

ELECTRICAL INSTALLATION

JC 4: Coordinate bath fan exhaust duct direction with HVAC and Electrical Contractor.

- How
- Why
- What to avoid



A photograph showing HVAC ductwork in a crawlspace. The ducts are wrapped in silver insulation and are surrounded by wooden joists and other pipes. The text 'How?' is overlaid in the top left corner.

How?

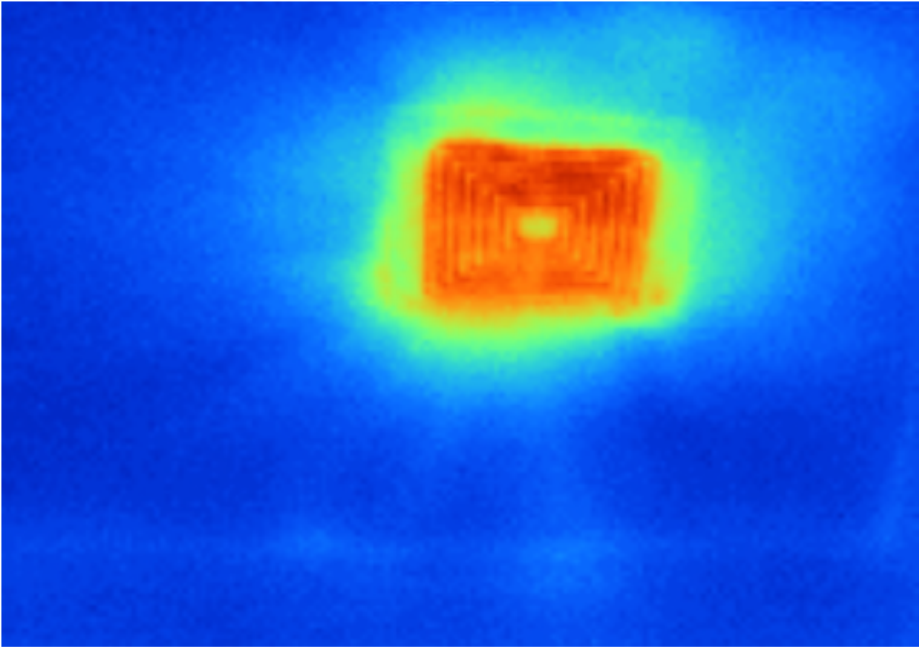
Talk to the HVAC Contractor





Why?





Test to make sure it works



ELECTRICAL

ELECTRICAL INSTALLATION

JC 5: Install high-efficacy lamps (e.g., CFLs, LEDs, fluorescent) or lamps controlled by occupancy sensors in 50% of light fixtures.



PRODUCT